

# Ashland City Hall Concept Design June 3, 2019



## 2018 Concept Design Process

Steering Committee Involvement

Site Analysis for 3 sites

Concept Exploration for each site

Decision Considerations / Criteria

Cost Modeling

Renderings

Council Input

## 2019 Direction and Process

Explore scaled-down concept at City Hall

Identify upgrades for 100-Year building

Verify Miller Engineering seismic upgrade approach (*KPFF validated ME concept*)

Cost Modeling

Council Input

## Concept Design Approach

Holistic solution (address seismic, safety, energy, accessibility, functionality needs)

Maintain existing exterior walls and historic features of City Hall

Flexible, efficient configuration in existing footprint, expand into mechanical well

Accommodate departments currently in City Hall

Strengthen relationship to Plaza

Improve accessibility (circulation, elevator)

Equitable access to light and views

## 100-Year Building Upgrades

Seismic upgrade

Remove interior demising wall

New roof

New windows and doors

New mechanical, electrical, plumbing systems

Improve safety & security

**CITY HALL CONTEXT  
IMAGES**



Plaza, view looking North



City Hall, view looking East

**CITY HALL CONTEXT  
IMAGES**



South side stairs to Theatre



West Facade

# LEVEL 1

## Legend

- ACCOUNTING
  - CIRCULATION
  - CIRCULATION, VERTICAL
  - COMMON
  - FINANCE
  - SUPPORT
  - UTILITY BILLING
- 
- OPEN OFFICE AREAS
  - WALLS
  - GLAZING



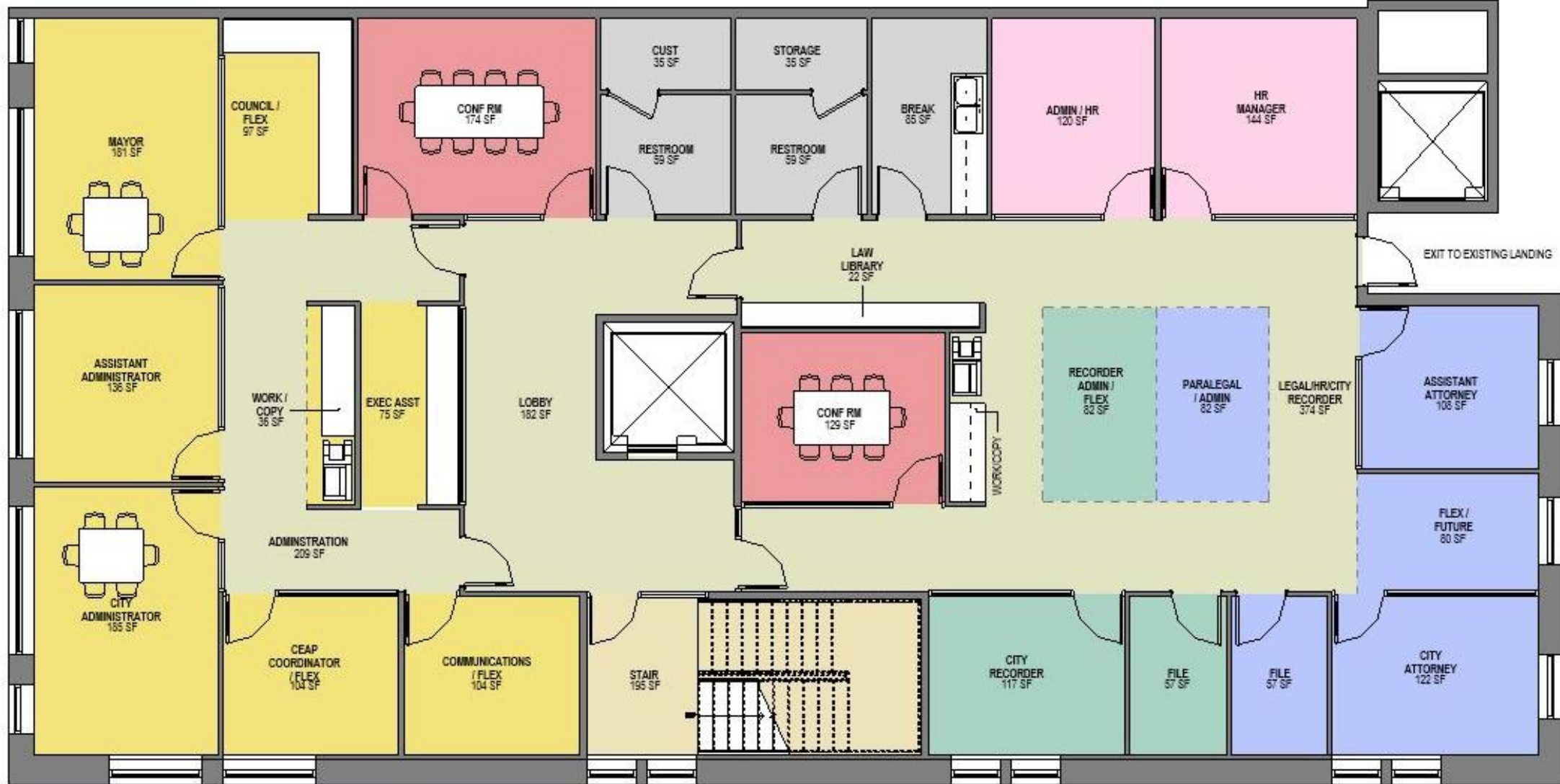
4,303gsf



# LEVEL 2

## Legend

- ACCOUNTING
- CIRCULATION
- CIRCULATION, VERTICAL
- COMMON
- FINANCE
- SUPPORT
- UTILITY BILLING
- OPEN OFFICE AREAS
- WALLS
- GLAZING



4,303gsf







---

# Thank you!

