



Croman Mill District

Potential Plan Revisions

City Council 3/05/2018



Airfield/Airport



Croman Mill

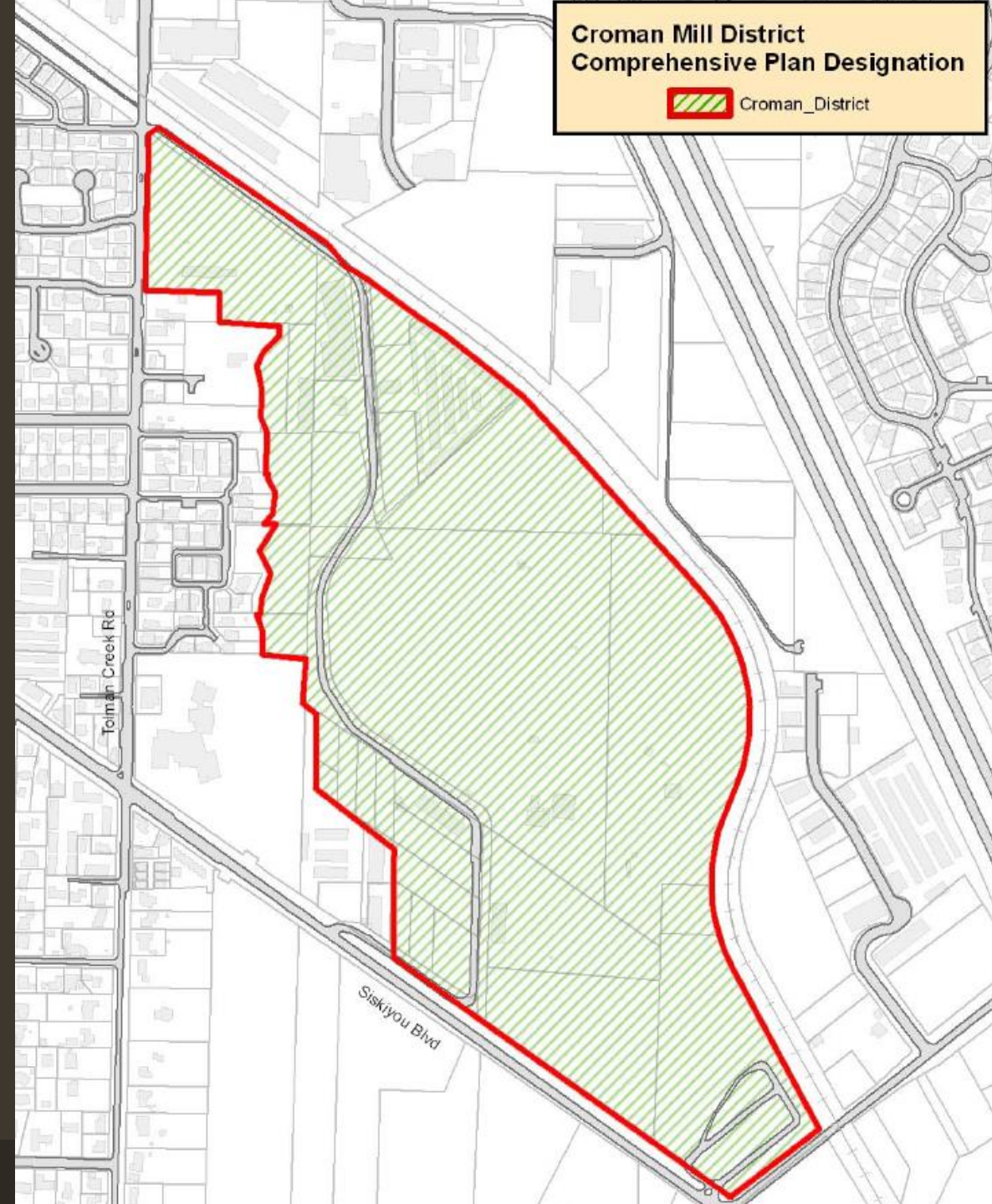


History

- 1930 Municipal Airport
- 1934 – 1996 Sawmill
- 2001 Planning Application Denied
- 2001 Temporary Asphalt Batch Plant
- 2004 Council Requests Issue Paper for Developing Master Plan
- 2007 Economic Opportunity Analysis (EOA)
- 2010 Croman Mill Site Redevelopment Plan and Zoning District
- 2010 Urban Renewal Financing Study

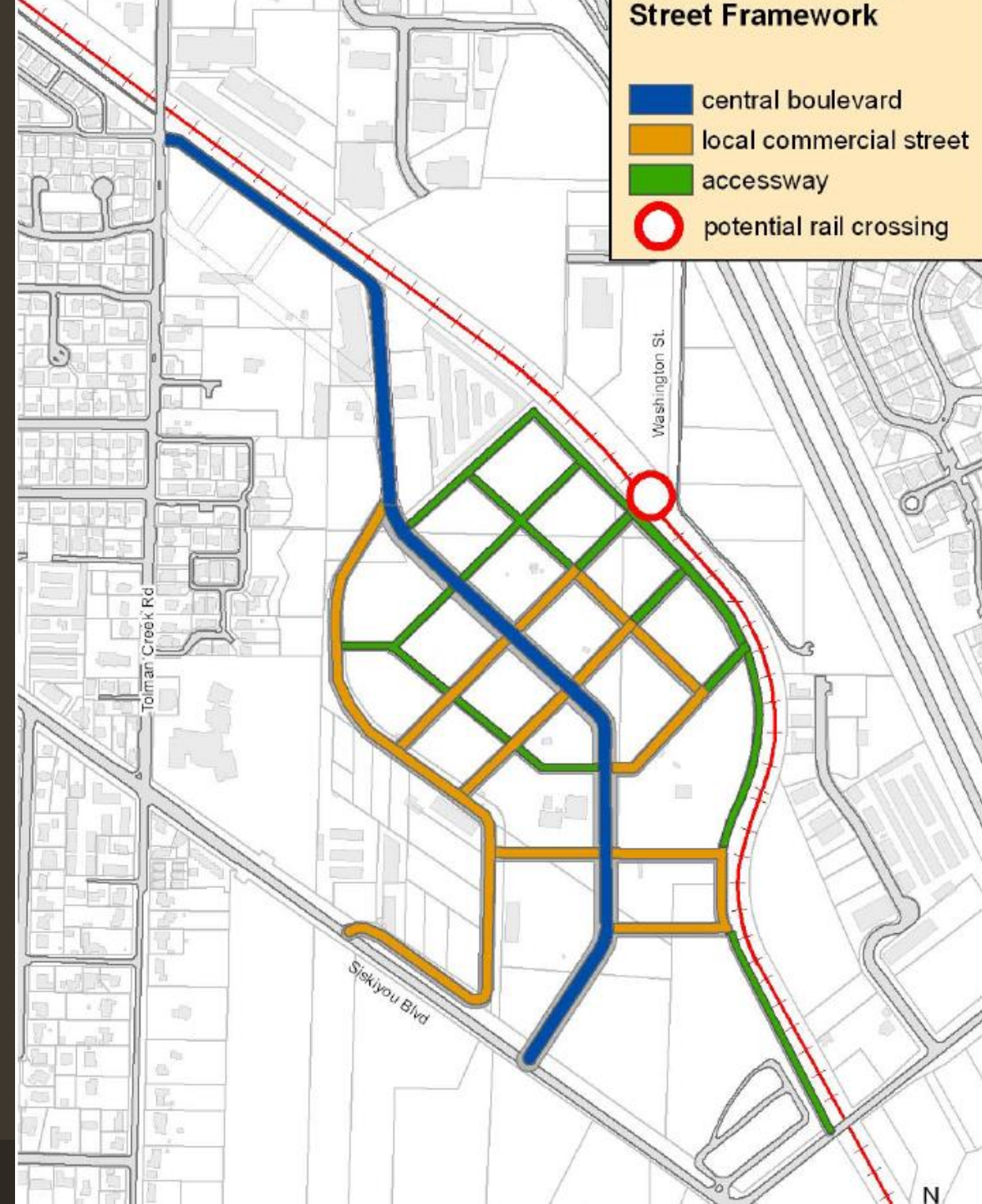
Croman Mill District

- District Boundaries
- Transportation network
- Zoning and Development Standards



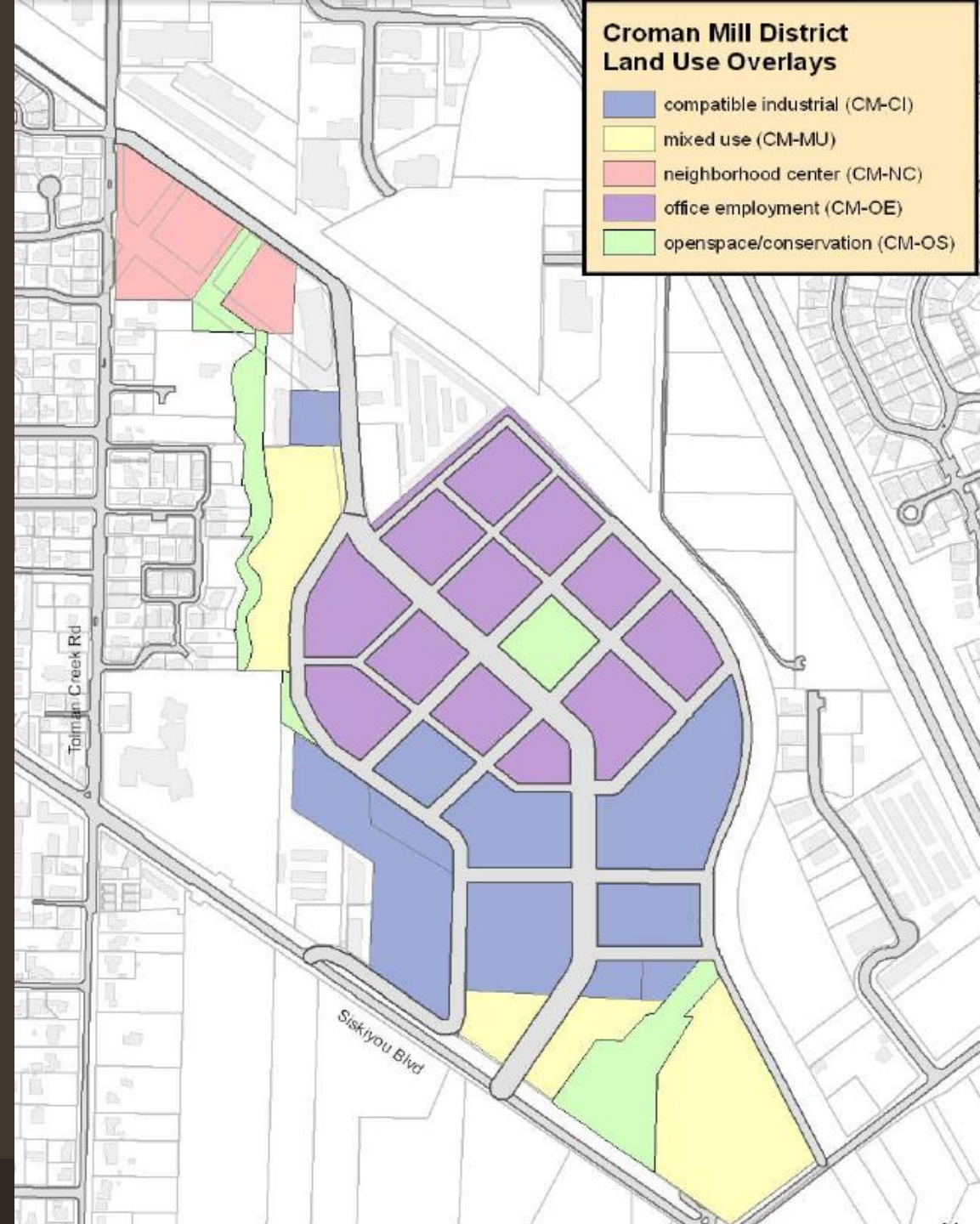
Croman Mill District

- District Boundaries
- **Transportation network**
- Zoning and Development Standards



Croman Mill District

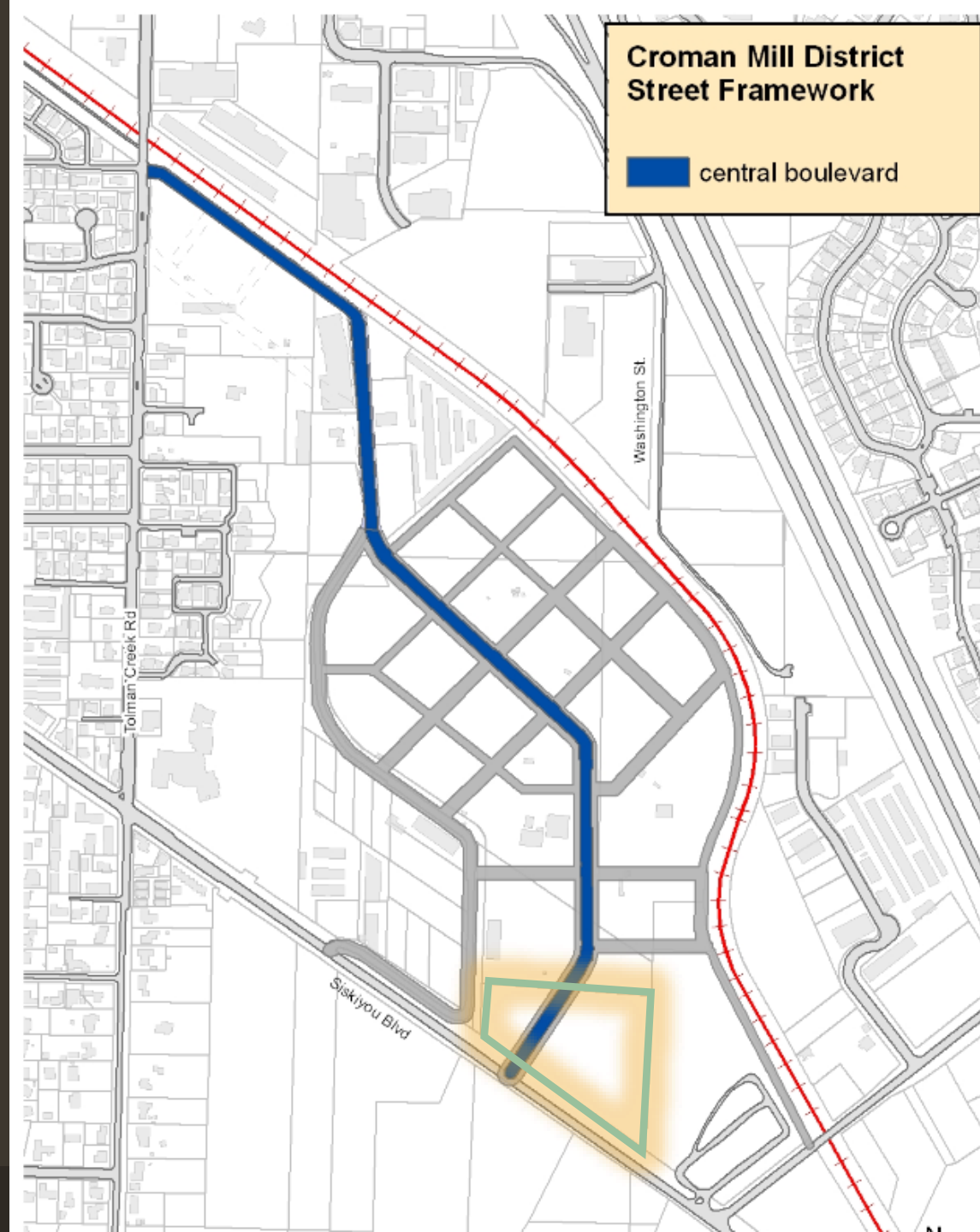
- District Boundaries
- Transportation network
- Zoning and Development Standards



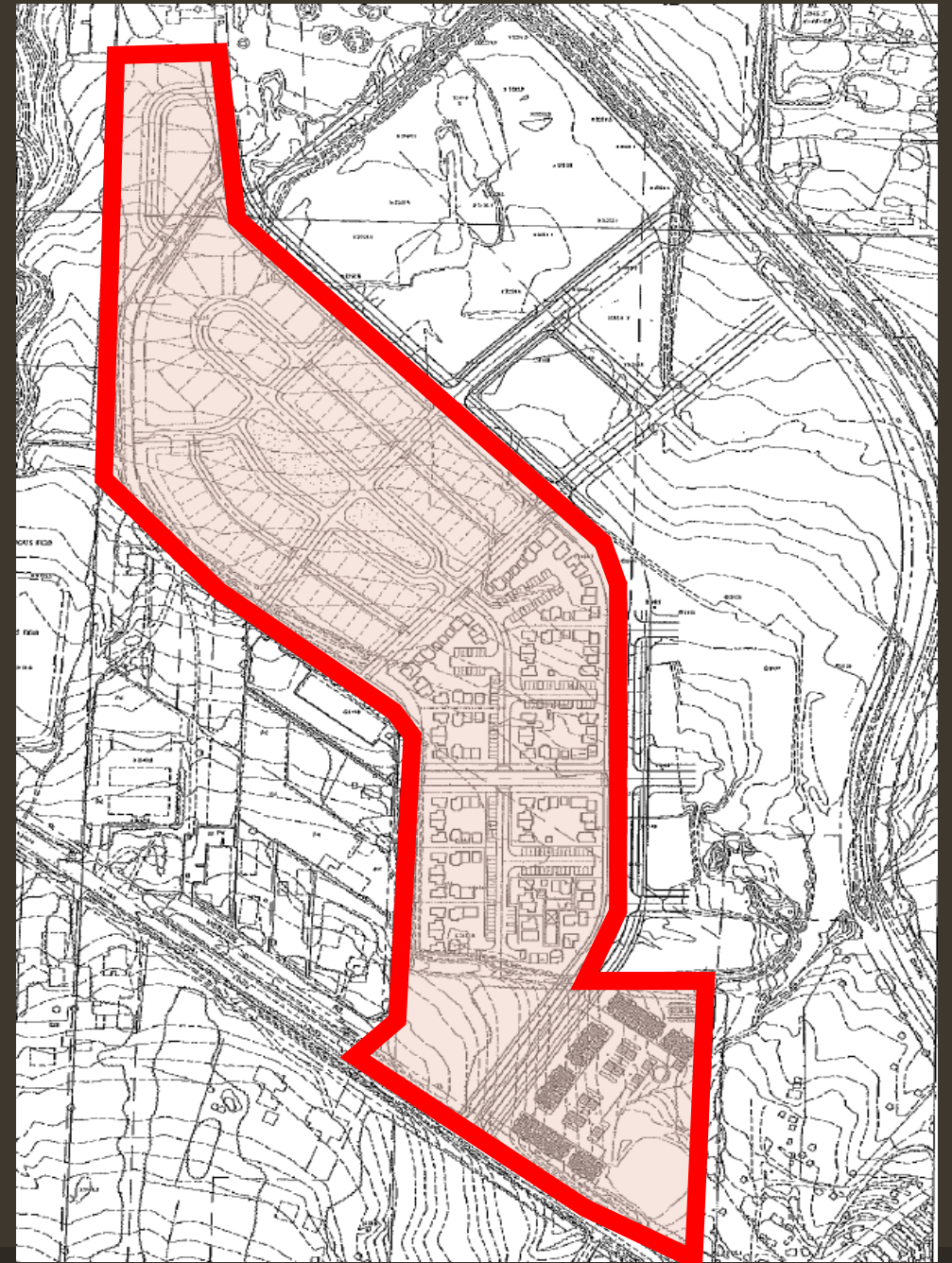
Croman Mill District Update

Objectives

- Facilitate Infrastructure Improvements
- Review Housing Needs
- Review Commercial Land Needs
- Changes to Zoning
- Annex Southern portion of property



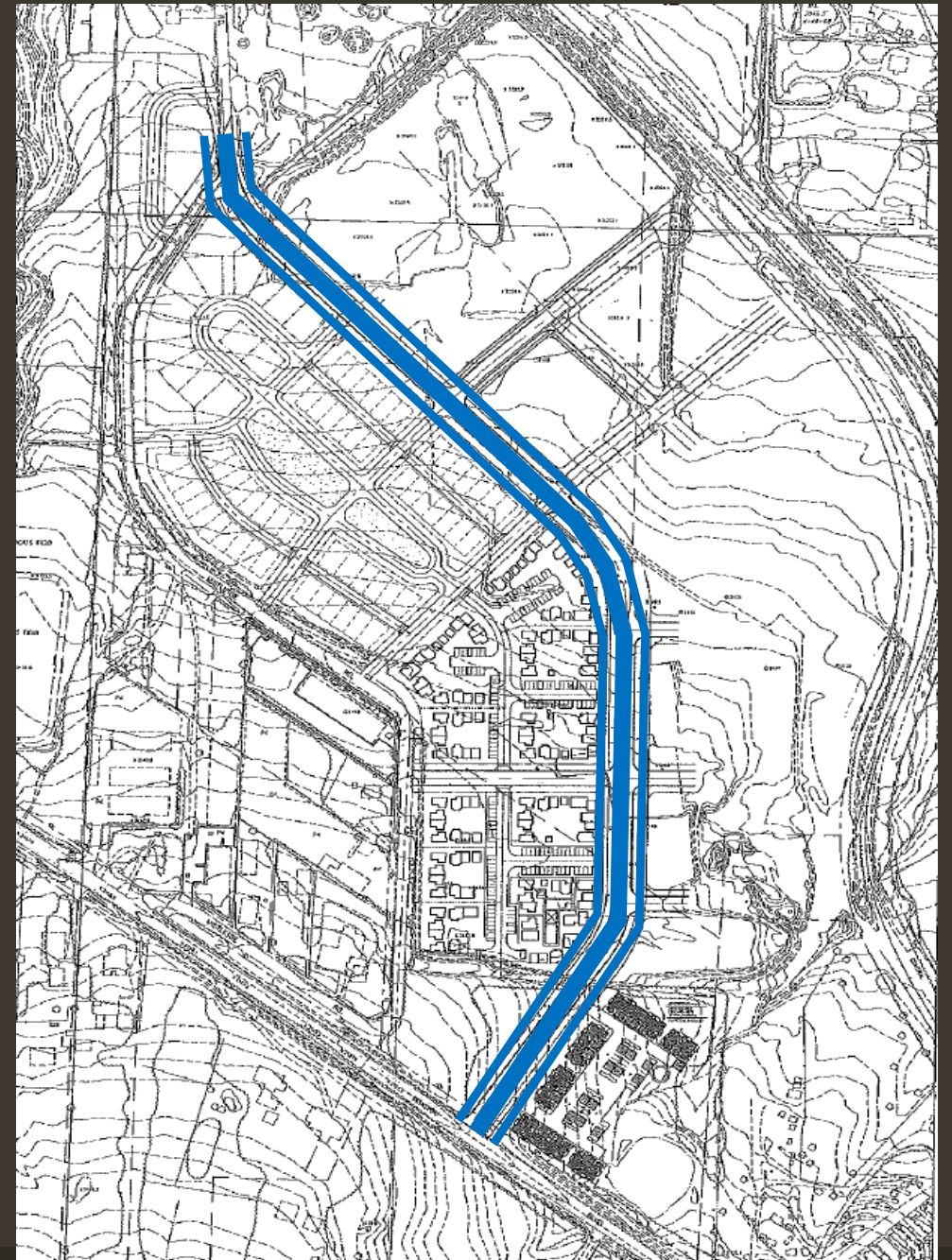
Potential Revision Areas

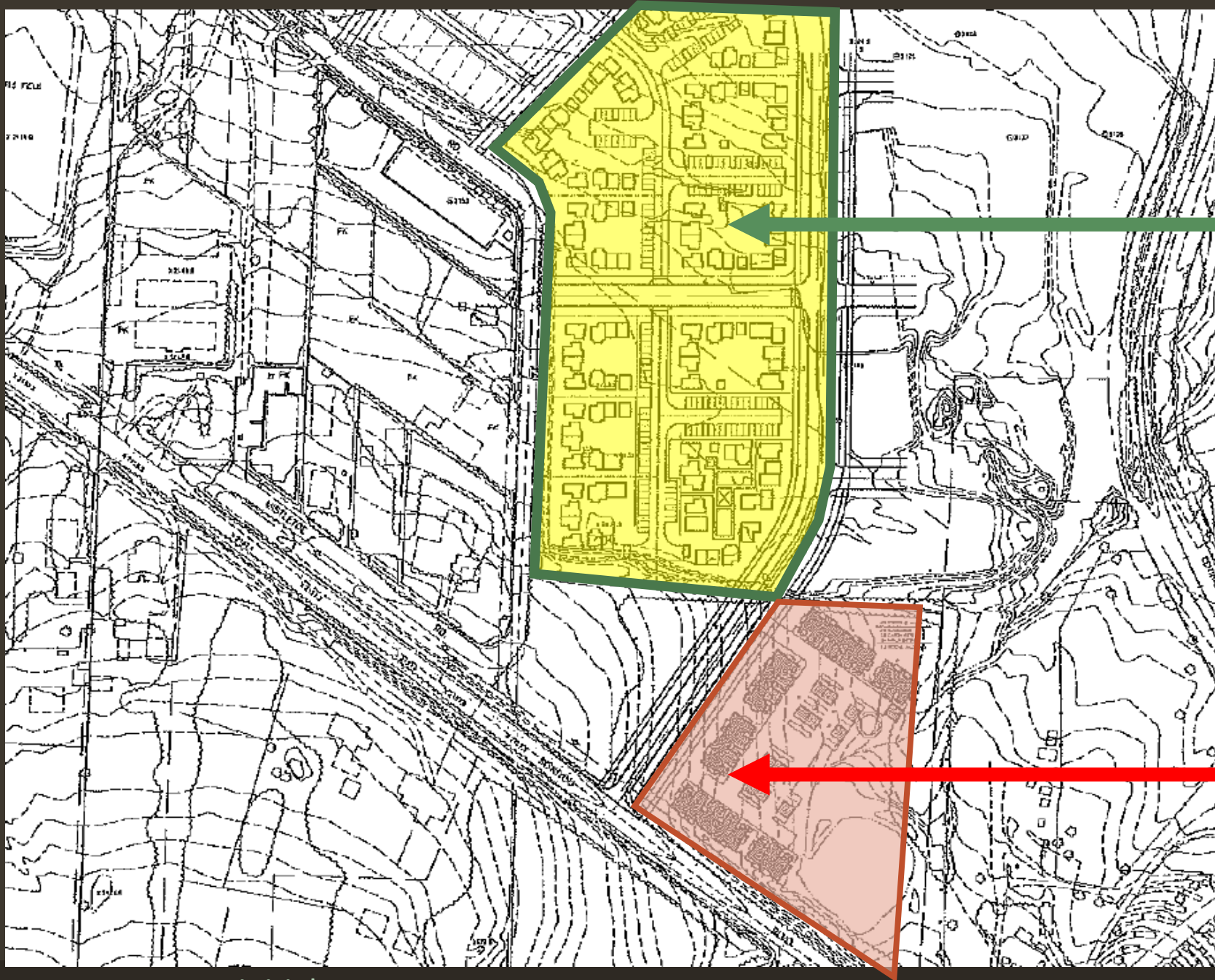


Property owner initial concept

Infrastructure

- Streets
 - Central Boulevard
 - Neighborhood streets
- Intersection improvements
 - Siskiyou Blvd
 - Mistletoe Rd.
- Public Utilities
 - Water, Sewer, Storm, Electric
 - Capacity for future Commercial Development



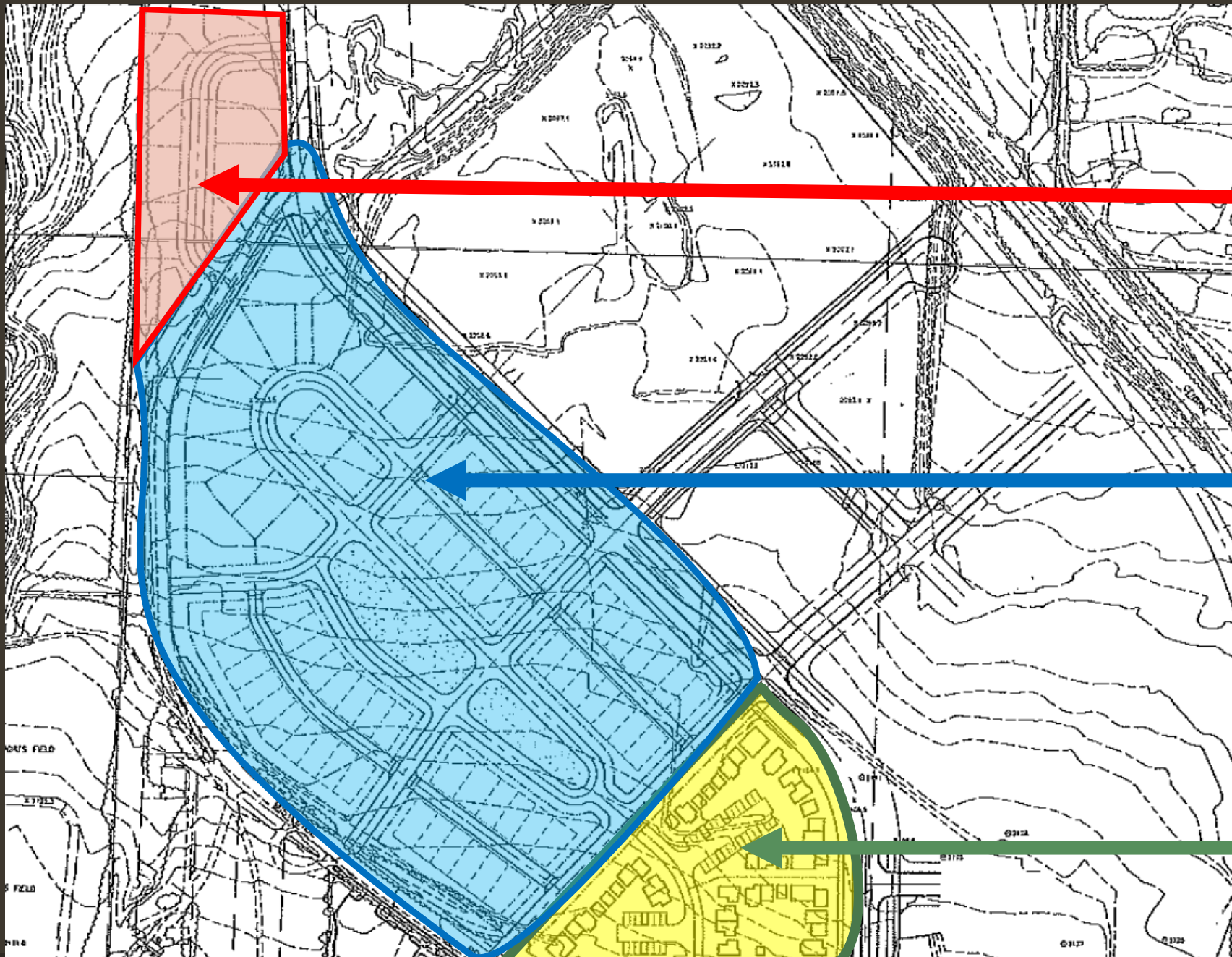


Housing

Cottage Housing

Affordable Rental
Housing (option 1)

Property owner initial concept



Housing

Affordable Rental Housing (option 2)

Small Lot Single Family

Cottage Housing

Property owner initial concept

Potential Plan Amendments

Scope of work

- Review Existing Zoning
 - Employment and Light Industrial Needs
- Review Needed Housing Types
- Public Infrastructure Improvements
 - Transportation Impacts
 - Capacity
 - Timing
- Development Feasibility
- Review Site Conditions
 - Environmental issues
- Memorandum of Understanding
- Planning Application Process

